



Microsoft Dynamics CRM for the Enterprise

Achieve a complete and consistent customer view across the enterprise with Microsoft Dynamics™ CRM

Provide your people with the tools and information they need to create a 360 degree view of customers, using a highly flexible customer relationship management solution that can adapt, grow, and scale with your business. Built on a highly flexible platform, Microsoft Dynamics CRM business software provides a solution that is easy to adapt as your business changes.

Achieve rapid return on investment and help keep costs down with efficient manageability and the ability to choose on-demand, on-premise, or to move between these deployment options. Provide enterprise level performance and scale to support the needs of local business groups up to the largest global enterprises.

Microsoft Dynamics CRM helps enterprise organizations to:

- Attain a 360-degree view of customers
- Achieve reliable user adoption
- Adapt quickly to business change
- Accelerate project delivery and returns

Fits Your People

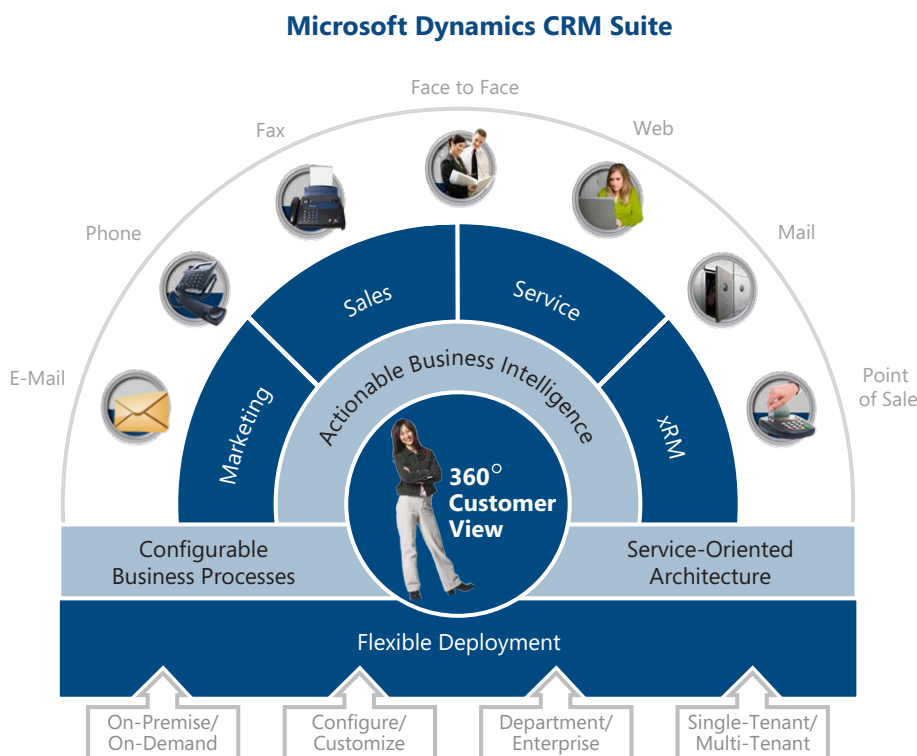
Rich CRM capabilities within a familiar Microsoft Office experience

Fits Your Business

Flexible design and process automation with real-time business insight

Fits Your Environment

Fast to deploy, simple to customize and easy to manage



“We’ve experienced four times the user adoption with CRM than with our previous sales automation system. By keeping our approach simple, our team has been more willing to embrace CRM as a tool they use every day.”

JOHN JASSMANN
National Sales Leader,
Construction Vertical,
Beecher Carlson

ACHIEVE RELIABLE USER ADOPTION

Give users access to role-based information and customer management capabilities in the familiar applications that they use every day.

- **Achieve high user adoption** through integration with familiar Microsoft Office productivity applications.
- **Improve user productivity** by consolidating customer information into a single location with easy-to-use reporting, visualization, and customer management capabilities.
- **Reduce training costs** and enable users to get started right away by providing CRM functionality integrated with Microsoft Office productivity tools they already use.
- **Enable users to work virtually anywhere** with support for mobile users and offline access to CRM functionality and reporting from synchronized data.

ADAPT QUICKLY TO BUSINESS CHANGES

Adapt quickly to changing markets with a CRM solution that is designed with the flexibility to grow and change with your business. Quickly deploy and customize your CRM application to fit your business needs with point-and-click customization.

- **Change quickly** using visual tools that allow business units to rapidly customize Microsoft Dynamics CRM at the business analyst level. Create and change entities, forms, workflows and more to keep pace with changing business needs.
- **Change deeply** in on-premise deployments with standard .NET development tools and skill sets in IT to make upgradable customizations quickly and efficiently. Leverage the native SOA architecture and standard web services to unify customer processes across enterprise applications.
- **Change completely** by using Microsoft Dynamics CRM as a platform for relationship management solutions that reach beyond the traditional boundaries of CRM.

The screenshot displays the Microsoft Dynamics CRM interface for a 'Form Account'. The window title is 'Form Account' and it includes standard menu items like 'Save and Close', 'Preview', and 'Help'. The main content area is divided into sections: 'Business Information' (Territory, Category), 'Company Information' (Industry, Annual Revenue, Ownership, No. of Employees, Ticker Symbol, SIC Code), and 'Description'. On the right side, there is a 'Common Tasks' panel with icons for 'Add a Tab', 'Add a Section', 'Add Fields', 'Add an IFRAME', 'Change Properties', 'Remove', and 'Form Properties'. The interface is designed for easy, visual customization of the CRM form.

Point and click customization

ATTAIN A 360-DEGREE VIEW OF CUSTOMERS

Turn disparate data into actionable information by making it available to the people who need it most—the end-users. Consolidate data stored throughout the enterprise, whether in line-of-business systems, custom applications, or on users' desktops, and empower everyday CRM users with easy reporting and actionable analytics.

- **Put business insight in the hands of users** with wizard-based tools for reporting so they can gain timely access to information and insight without the assistance of IT.
- **Deliver actionable intelligence** by combining predictive analytics with business automation so people have access to the information they need to help achieve a 360-degree view of the customer.
- **Minimize costs** by taking advantage of powerful business intelligence technologies included in standard Microsoft products such as Microsoft SQL Server and Microsoft Excel.

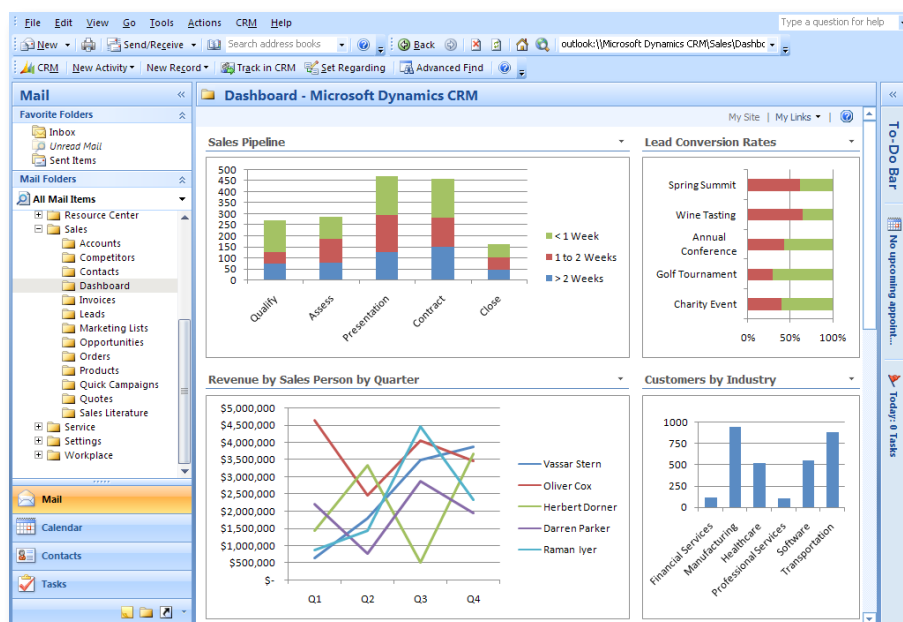
ACCELERATE PROJECT DELIVERY AND RETURNS

Deliver quick wins for business, IT, and finance with rapid return on investment and a low total cost of ownership. Streamlined installation and simplified administration features help you get up and running rapidly.

- **Take advantage of your investment in Microsoft products and technologies** thanks to close integration with other Microsoft software and services, you can leverage the money, training and time investment your organization has made in Microsoft tools.
- **Interoperate seamlessly** with existing applications through the native services oriented architecture and standards-based web services
- **Choose from deployment options** that include on-demand, on-premise, and self-hosted implementations all delivered on a common architecture and data model. Change your mind at any time or host it internally for ultimate control and flexibility.

“The close integration between Microsoft Dynamics CRM and our other Microsoft software, including Microsoft SQL Server™, and Microsoft Office Outlook®, Word, Excel® and SharePoint® Server, provides Cypress Care with enterprise-wide customer management for the first time.”

MARC DATELLE
President,
Cypress Care



Microsoft Dynamics CRM dashboard using Microsoft Office Outlook, SharePoint and PerformancePoint™ in an on-premise deployment.

“We needed all of our worldwide offices on one common CRM solution to harness the firm’s overall knowledge of our clients. Our clients are global and we need a unified view of their organizations to serve them effectively.”

JENNIFER GRASSAN
Project Manager for
CRM System in the Americas,
Jones Lang LaSalle

For more information about
Microsoft Dynamics CRM, contact
your Microsoft representative or visit:
www.microsoft.com/dynamics/crm

AVAILABILITY, PERFORMANCE, SCALABILITY

Scale efficiently to the needs of the largest global deployments with a CRM solution that is highly available and responsive. In on-premise deployments, take complete control with flexible options for load balancing and clustering for data and transaction volume, and configuring and optimizing for speed and bandwidth requirements. Best of all you can do all this economically with standard Microsoft technology tools and skills.

- **Optimize performance** with technologies that use established skills and standard optimization techniques, including Microsoft Internet Information Services, Microsoft SQL Server® database software, and Microsoft Exchange Server.
- **Configure to meet bandwidth requirements** with highly flexible options for delivering responsive performance over the local area network (LAN) or wide area network (WAN).
- **Scale up and out** with load balancing, web farm clustering, exchange clustering, SQL Server mirroring to flexibly meet the needs of large or small enterprise deployments.
- **Deploy for scalability** with on-demand, on-premise, and mixed model options all based on the same data model and service grid architecture.

