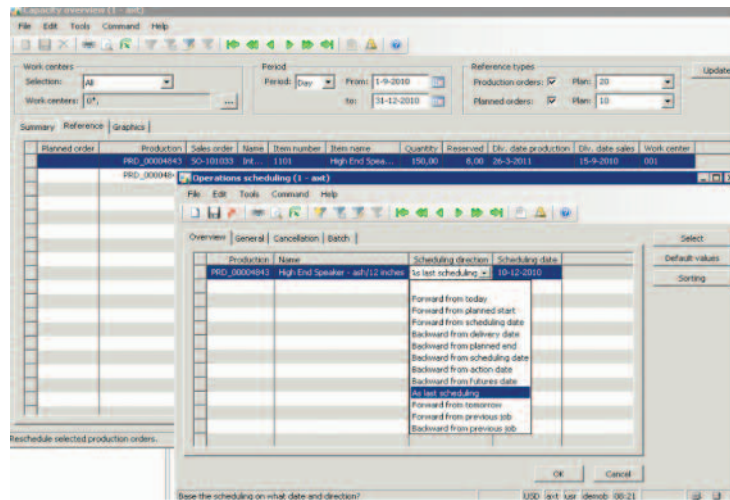
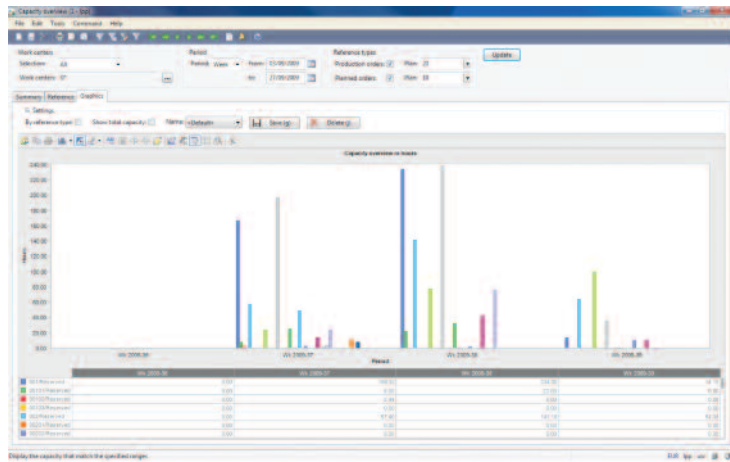


Why use Advanced Production?

Advanced Production presents a complete overview of the available capacity and reservations information. Visibility of orders and any cost or process deviations are provided and further refined using filters. Advanced Production gives you the ability to bring detailed planning to the shop floor. Management by exception with the delivery-date as the key criteria provides the means to meet your customer's expectations.

The capacity overview delivers graphical insight in the capacity of the workcenters(group). Users can easily switch between the capacity for only production orders or see what influence planned production orders have on capacity. If issues are identified, production orders can be rescheduled directly from this screen.



Maintain Microsoft Dynamics AX with Green Beacon's

SmoothSail Managed Services

- Dedicated support staff at our Newton, MA HQ
- On-demand and cost-effective management services for CRM and ERP applications
- Advisory services to increase business efficiency by improving system usage
- Support and maintenance services to reduce down-time and ensure productivity so that systems operate at high availability

Advantages of Advanced Production

- Increased delivery reliability.
- Management by exception: time savings due to exception-only focus.
- Visual management: user-friendly icons and colors.
- Elimination of costly errors as item characteristics are available through the entire process.



- Established in 2001
- Headquartered in Boston, Massachusetts
- Offices in New York, Philadelphia, and Houston
- Specialists in Microsoft Dynamics Business Solutions
- ERP and CRM Consulting Services
- CompassPoint Solution Software Accelerators
- SmoothSail Support & Managed Services